



PRODUCT CATALOGUE 2023

CONTENTS

About Our Company	3
Our Journey to Net Zero	4
Training & Education	6
Easi-Switch	7
Surgical Gowns	8
Surgical Drapes	16
Respiratory Protective Equipment	44
Fit Testing Equipment	50

ABOUT OUR COMPANY

As one of the leading PPE and RPE suppliers in the world, Full Support Healthcare offer a comprehensive service for all of your infection prevention and surgical needs.

Prioritising education, service and relationships, we offer a unique experience in the healthcare supplies arena.

You can join thousands of other providers across the UK in ordering our products in confidence, knowing they have been fully designed in collaboration with some of the UK's leading medical and procurement professionals, and are fully compliant with UKCE & CE standards, regulations and guidelines.



OUR JOURNEY TO NET ZERO

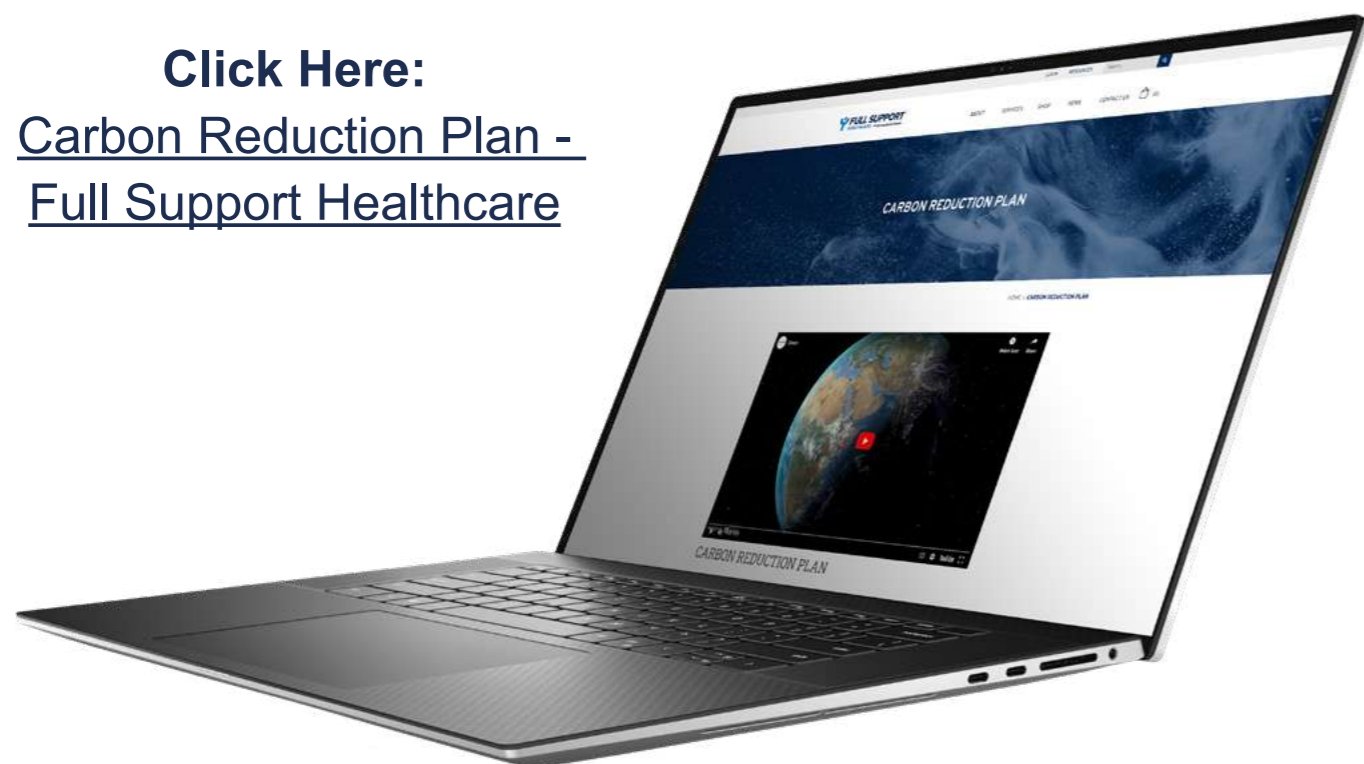
In the 2015 Paris Agreement, Governments from around the World committed to taking drastic steps towards reducing the effects of climate change by keeping the rise in mean global temperature below 2°C above pre-industrial levels. In order to meet this target and avoid the potentially catastrophic impact of global warming, greenhouse gas emissions must halve by 2030, and drop to net-zero by 2050.

At Full Support Healthcare our own net zero journey has already begun, starting with a carbon footprint analysis that will take us to full PPN06/21 compliance covering Scope 1, 2 and five Scope 3 emissions (upstream and downstream deliveries, business travel, commuting and waste). As part of the analysis, we will be reporting our emissions data annually on this webpage.

Through this process, Full Support Healthcare will set medium and long-term goals to drive a 50% reduction of our emissions by 2030 and a 100% reduction by 2040 – to help the NHS reach its own net zero target.

Our initial focus is around our three big key areas of emissions; scope 1 & 2 emissions and 2 of the scope 3 emissions (both upstream and downstream deliveries), but expanding to nine in total that go above and beyond the initial scope set out by the NHS. We have as a company also decided to include delivery from point of manufacture from our overseas manufacturing sites in this initial scope.

Click Here:
[Carbon Reduction Plan - Full Support Healthcare](#)



Our Sustainability Goals

Only by joining together with our manufacturers, suppliers and customers can we work towards being truly net zero by 2040



Direct & Indirect Emissions

100% of our electricity supply converted to renewable sources by 2030



Upstream Transportation & Distribution

Exclusively partner with suppliers who are also committed to delivering a net zero service by 2040



Downstream Transportation & Distribution

Diversify our portfolio to include more sustainable re-usable, locally produced products



Waste

Zero landfill target by 2040 with SMART initiatives for sourcing recyclable packaging



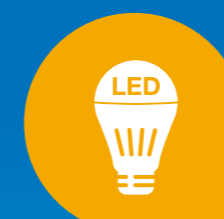
Business Travel

Reduce business travel through increased virtual conferencing



Employee Commuting & Home Working

Introduce flexible working agreements to significantly reduce commuter mileage



Green Team

Set up a new employee engagement initiative to incorporate change at every level across the business



Education

Work with suppliers and customers to share the importance of sustainable production from cradle to grave



Sustainable Suppliers

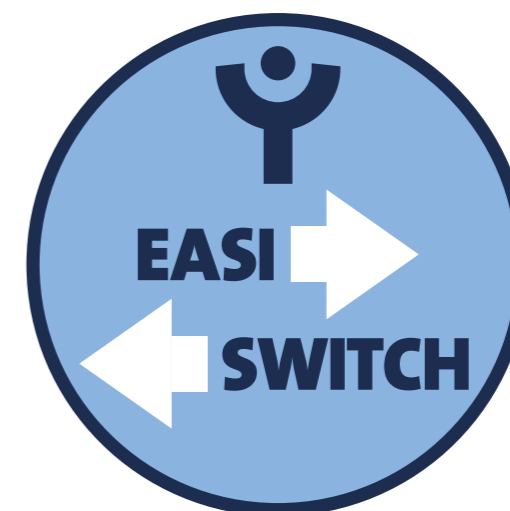
Build a network of suppliers that are ISO14001 environmental management certified



TRAINING & EDUCATION

We believe that proper education and training is as important as a good product at an affordable price.

That's why we've invested in building up a number of CPD accredited training courses and a team of regional Fit2Fit accredited educators with **over 50 years' experience** in health and safety, **training over 100,000 people in the last 5 years.**



EASI-SWITCH

We are continually developing our comprehensive range of products to incorporate the latest innovations in practice and material technology – providing our users with the very best protection and comfort at an affordable price.

A number of products in this catalogue have been labelled as “**Easi-Switch**”. This denotes when a product has been identified as being a popular, non-contentious, item in a common size/shape/material. With Full Support Healthcare’s competitive pricing structure and excellent on-going customer support, switching from your current supplier to Full Support Healthcare has never been easier.

Get in touch today to see how much money we can help your Trust save, while still receiving top-quality product.



SURGICAL GOWNS

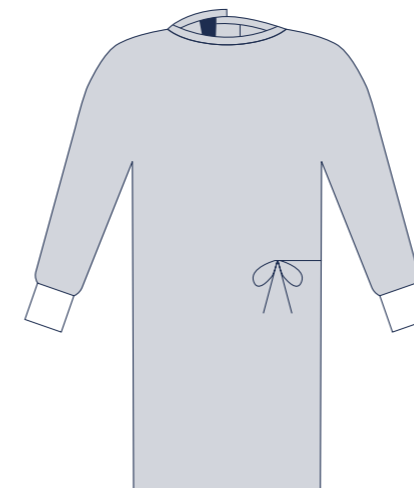
EASIGOWN™ comfort

A light and comfortable gown available in a range of sizes and protection levels.

Easigown Comfort offers exceptional value whilst providing maximum comfort.



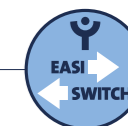
Velcro Neck Fastening



Easigown™ Comfort Standard Protection

Suitable for low fluid level procedures.

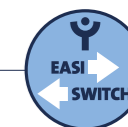
Size	Qty	FSH Code	NPC	Direct from FSH	Stocked at NHSSC	E-Direct via NHSSC
Large	50	38010	BWK85095	✓	✓	-
X-Large	48	38012A	BWK85094	✓	-	-
X-Large, X-Long	48	38013A	BWK85093	✓	-	-



Easigown™ Comfort Reinforced Protection

Suitable for low to medium fluid level procedures.

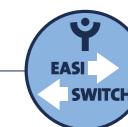
Size	Qty	FSH Code	NPC	Direct from FSH	Stocked at NHSSC	E-Direct via NHSSC
Large	46	38120A	BWK85092	✓	✓	-
X-Large	52	38122A	BWK85106	✓	-	-
X-Large, X-Long	50	38123	BWK85101	✓	✓	-



Easigown™ Comfort - Zoned Impervious Protection

Suitable for high fluid level procedures.

Size	Qty	FSH Code	NPC	Direct from FSH	Stocked at NHSSC	E-Direct via NHSSC
Large	56	38210A	BWK85122	✓	-	-
X-Large	50	38212	BWK85121	✓	✓	-
X-Large, X-Long	46	38213A	BWK85103	✓	-	✓
XX-Large, X-Long	44	38215A	BWK85102	✓	-	✓

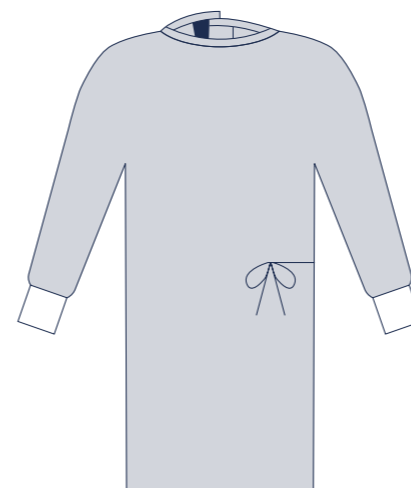
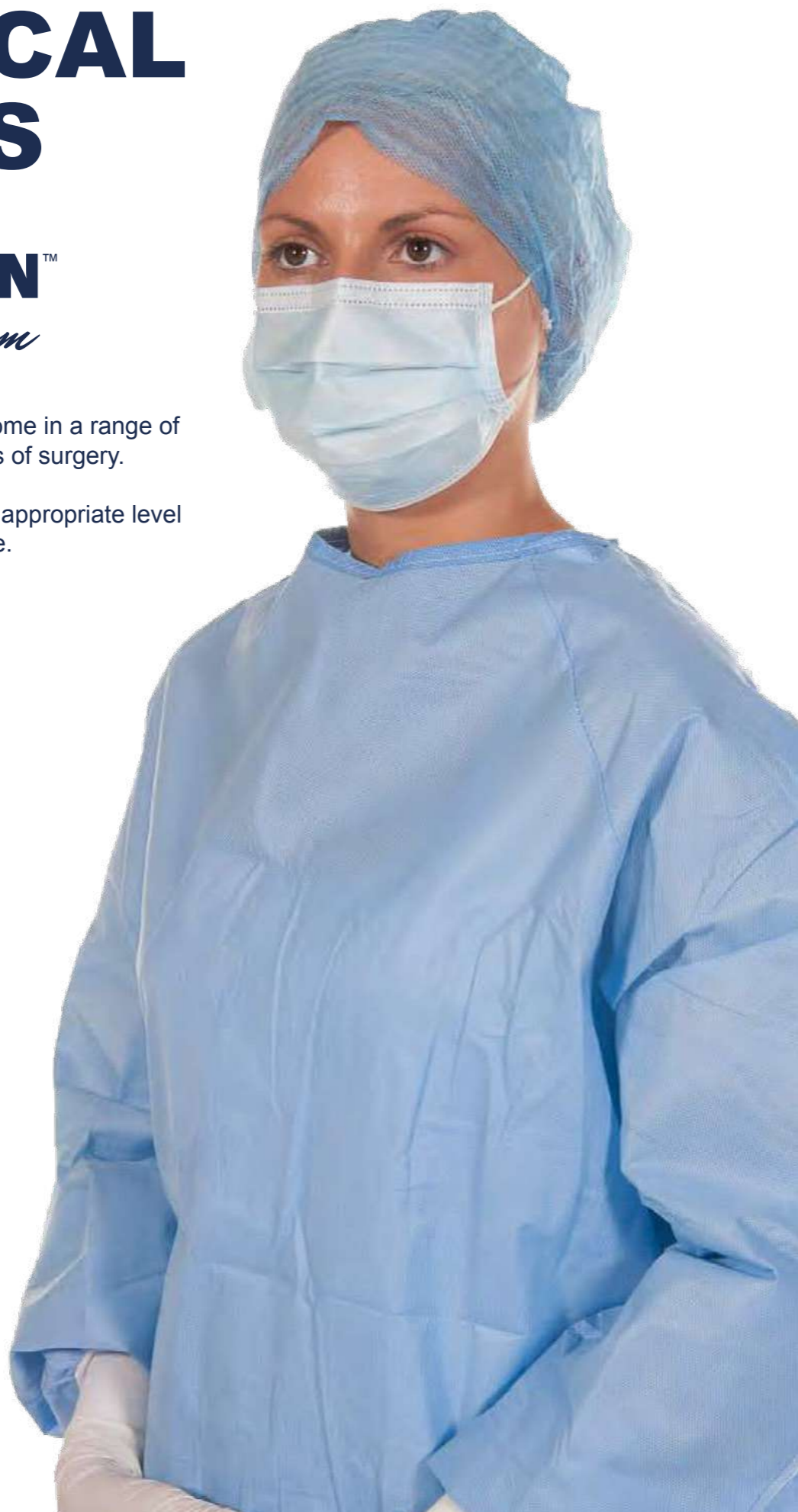


SURGICAL GOWNS

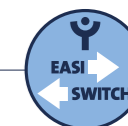
EASIGOWN™ *Premium*

Our premium surgical gowns come in a range of protection levels to suit all types of surgery.

Ensuring staff receive the most appropriate level of protection for each procedure.



Easigown™ Premium Standard Protection

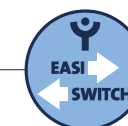


Suitable for low fluid level procedures.

Size	Qty	FSH Code	NPC	Direct from FSH	Stocked at NHSSC	E-Direct via NHSSC
Small/Medium	32	30009	-	✓	-	-
Large	32	30010	BWK85110	✓	✓	-
Large, X-Long	32	30011	-	✓	-	-
X-Large	30	30012	-	✓	-	-
X-Large, X-Long	30	30013	-	✓	-	-
XX-Large	22	30014	BWK85091	✓	-	✓
XX-Large, X-Long	22	30015	-	✓	-	-



Easigown™ Premium Reinforced Protection

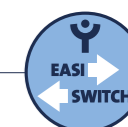


Suitable for low to medium fluid level procedures.

Size	Qty	FSH Code	NPC	Direct from FSH	Stocked at NHSSC	E-Direct via NHSSC
Small/Medium	30	30119	BWK85090	✓	✓	-
Large	30	30120	BWK85114	✓	✓	-
Large, X-Long	30	30121	BWK85120	✓	-	✓
X-Large	30	30122	BWK85100	✓	-	-
X-Large, X-Long	30	30123	BWK85099	✓	✓	-
XX-Large	20	30124	BWK85119	✓	✓	-
XX-Large, X-Long	20	30125	BWK85098	✓	-	✓



Easigown™ Premium Zoned Impervious Protection



Suitable for medium fluid level procedures.

Size	Qty	FSH Code	NPC	Direct from FSH	Stocked at NHSSC	E-Direct via NHSSC
Large	30	30210	BWK85118	✓	-	-
X-Large	30	30212	BWK85117	✓	✓	-
X-Large, X-Long	30	30213	BWK85097	✓	-	✓
XX-Large	20	30214	BWK85116	✓	✓	-
XX-Large, X-Long	20	30215	BWK85115	✓	-	✓

PROTECTIVE APRONS

EASIGOWN™ *comfort*

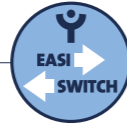
The Easigown Comfort and Premium long sleeve thumb looped aprons are designed for tasks where fully impervious non-sterile protection is needed, providing maximum protection and comfort.

The thumb loop design means that the arms of the apron do not ride up the arms and allows for a good seal between gloves and apron ensuring full arm protection.

Easigown™ Comfort - Protective Apron

Long Sleeves. Thumb Loops. Open-back gown. Impervious Protection.

Size	Qty	FSH Code	NPC	Direct from FSH	Stocked at NHSSC	E-Direct via NHSSC
Universal	100	28030	-	✓	-	-



Thumb Loops

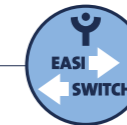
WARM UP JACKETS

Effective and comfortable. Keeps your staff warm, safe and protected while moving between wards. Made from a fluid resistant fabric. Available in short or long sleeves to comply with your hospital's infection prevention recommendations.

Warm-Up Jacket - Short Sleeves

Fluid resistant. 3 pockets. Short sleeves.

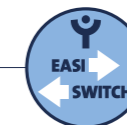
Size	Qty	FSH Code	NPC	Direct from FSH	Stocked at NHSSC	E-Direct via NHSSC
Large	50	20033	BWT 087	✓	-	✓
X-Large	50	20034	BWT 088	✓	-	✓



Warm-Up Jacket - Long Sleeves

Fluid resistant. 3 pockets. Long sleeves with knitted cuffs.

Size	Qty	FSH Code	NPC	Direct from FSH	Stocked at NHSSC	E-Direct via NHSSC
Large	50	20025	BWT 028	✓	-	✓
X-Large	50	20026	BWT 030	✓	-	✓



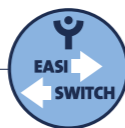
Available with long sleeves

COVER GOWNS

EASIGOWN™ *Premium*

Our cover gowns are specially designed to offer breathable, comfortable protection for you and your uniform. Available in lightweight and standard designs, our cover gowns come in one universal size to reduce stock holding and maximise ease of use.

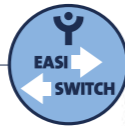
Easigown™ Premium - Cover Gown Lite



Lightweight and cool. Non-sterile long sleeves. Knitted cuffs. Breathable. Length: 132cm (+/- 5cm)

Size	Qty	FSH Code	Direct from FSH	Stocked at NHSSC	E-Direct via NHSSC
Universal	100	20006	✓	-	-

Easigown™ Premium - Cover Gown



Blue. Non-sterile long sleeves. Knitted cuffs. Breathable. Length: 132cm (+/- 5cm)

Size	Qty	FSH Code	Direct from FSH	Stocked at NHSSC	E-Direct via NHSSC
Universal	50	20012	✓	-	-



ISOLATION GOWN

EASIGOWN™ *Premium*

A light, comfortable, spunlace, non-sterile gown. Ideal for protecting healthcare workers' arms, uniform and body during patient-care activities.

- Knitted Cuffs
- Velcro fastening
- Non-sterile

Easigown™ Premium - Isolation Gown



Size	Qty	FSH Code	Direct from FSH	Stocked at NHSSC	E-Direct via NHSSC
Universal	50	40012L	✓	-	-

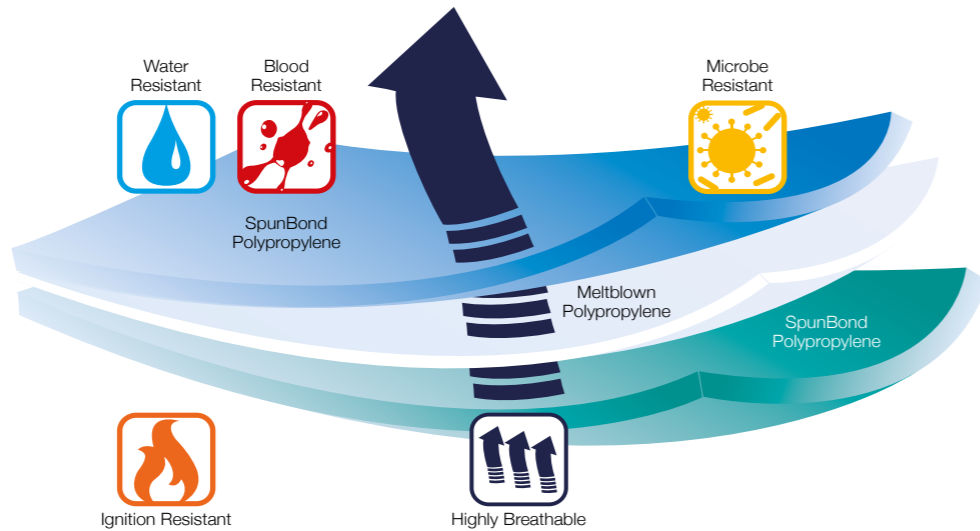


SURGICAL DRAPES



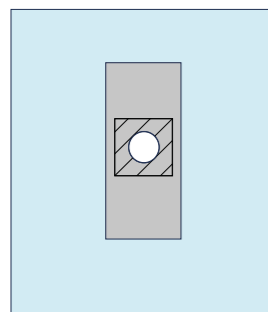
Material Technology

By using the next generation of SMS technology, and carefully selecting the number of SpunBond and Meltblown layers, we have been able to create a range of water, blood, microbe and ignition resistant materials - tailored to suit your specific hospital requirements.



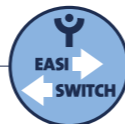
EASIDRAPE™

ANGIOGRAPHY & CARDIOVASCULAR

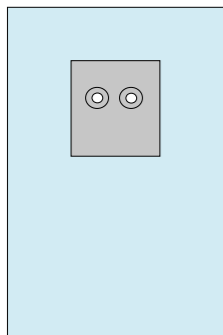


Brachial Angiography Drape

7cm fenestration with adhesive and fabric reinforcement.



Size	Qty	FSH Code	NPC	Direct from FSH	Stocked at NHSSC	E-Direct via NHSSC
79cm x 112cm	50	50668	VJD820	✓	-	✓

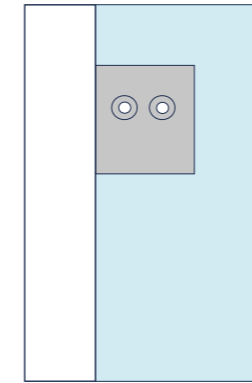


Femoral Angiography Drape 1

Two 7cm fenestrations with adhesive and fabric reinforcement.



Size	Qty	FSH Code	NPC	Direct from FSH	Stocked at NHSSC	E-Direct via NHSSC
193cm x 279cm	14	50663	VJD1464	✓	-	✓

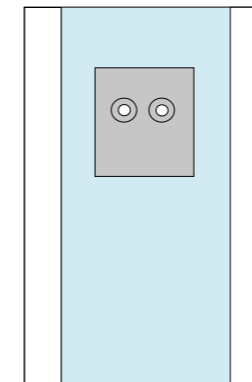


Femoral Angiography Drape 3

Single window and two 7cm fenestrations with adhesive and fabric reinforcement.



Size	Qty	FSH Code	NPC	Direct from FSH	Stocked at NHSSC	E-Direct via NHSSC
211cm x 330cm	14	50665	VJD2057	✓	-	✓

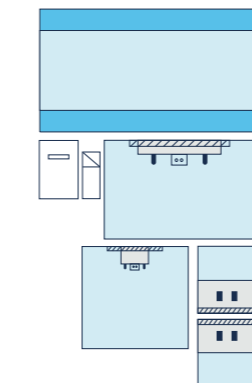


Femoral Angiography Drape 5

Dual windows and two 7cm fenestrations, with adhesive and fabric reinforcement.



Size	Qty	FSH Code	NPC	Direct from FSH	Stocked at NHSSC	E-Direct via NHSSC
225cm x 330cm	14	50667	VJD2058	✓	-	✓

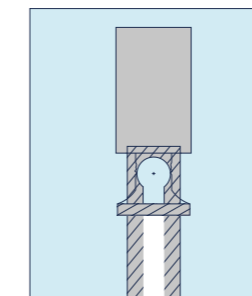


Universal Set

1 x top drape 157cm x 241cm, 1 x bottom drape, 157cm x 175cm and 2 x side drapes 90cm x 90cm all with positioning tape & fabric reinforcement, plus 1 x back table cover 137cm x 190cm zoned rein-forced, 1 x absorbent towel 38cm x 38cm and 1 x suture bag.



Size	Qty	FSH Code	NPC	Direct from FSH	Stocked at NHSSC	E-Direct via NHSSC
-	10	50401	VJD780	✓	-	✓



Vascular Under Leg Drape

Dual windows and two 7cm fenestrations, with adhesive and fabric reinforcement.

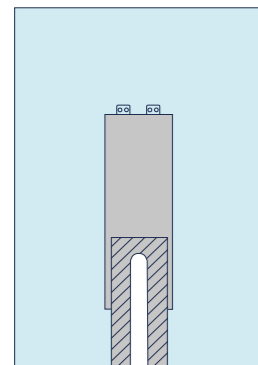
Size	Qty	FSH Code	NPC	Direct from FSH	Stocked at NHSSC	E-Direct via NHSSC
200cm x 260cm	30	50263	VJD1888	✓	-	✓

SURGICAL DRAPES



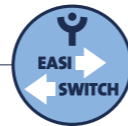
EASIDRAPE™

CARDIOVASCULAR & VASCULAR

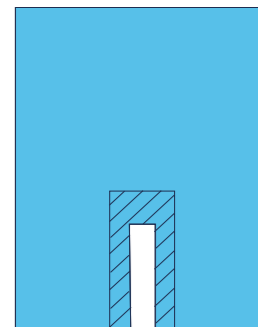


Adhesive Split Sheet

10 x 101cm adhesive split, fabric reinforcement and tube holders.

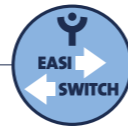


Size	Qty	FSH Code	NPC	Direct from FSH	Stocked at NHSSC	E-Direct via NHSSC
193cm x 304cm	30	50427	VJD800	✓	-	✓

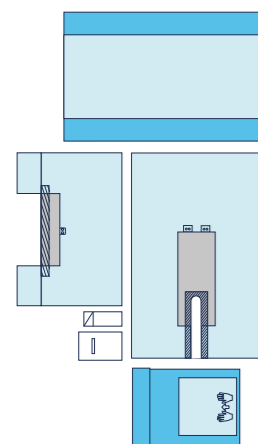


Impervious Split Sheet

With 15 x 60cm adhesive split.



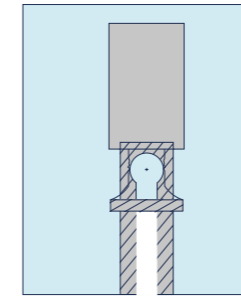
Size	Qty	FSH Code	NPC	Direct from FSH	Stocked at NHSSC	E-Direct via NHSSC
137cm x 193cm	30	50615	VJD813	✓	-	✓



U-Bar Pack

1 x U-drape 193cm x 304cm with 10cm x 101cm split, 1 x bar drape 157cm x 269cm both with positioning tape, fabric reinforcement & tube holders, plus 1 x back table cover 152cm x 228cm zoned reinforced, 1 x mayo cover 80cm x 144cm, 1 x absorbent towel 38cm x 38cm and 1 x suture bag.

Size	Qty	FSH Code	NPC	Direct from FSH	Stocked at NHSSC	E-Direct via NHSSC
-	10	50402	VJD781	✓	-	✓



Vascular Under Leg Drape

With 15 x 60cm adhesive split.

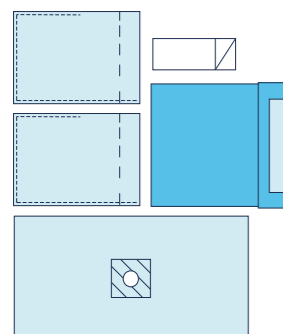


Size	Qty	FSH Code	NPC	Direct from FSH	Stocked at NHSSC	E-Direct via NHSSC
200cm x 260cm	30	50263	VJD1888	✓	-	✓



SURGICAL DRAPES

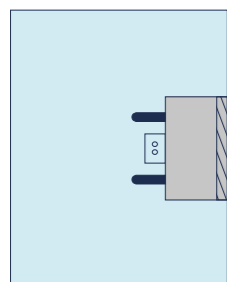
GENERAL SURGERY



D&C Pack

1 x perineal sheet 75cm x 160cm with 10cm perineal adhesive fenestration, 1 x under buttock drape 96cm x 122cm zoned reinforced, 2 x lithotomy leggings 79cm x 122cm with 15cm cuff and 1 x absorbent towel 38cm x 38cm.

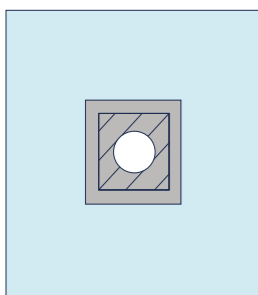
Size	Qty	FSH Code	NPC	Direct from FSH	Stocked at NHSSC	E-Direct via NHSSC
-	20	50409	VJD786	✓	-	✓



Bar Sheet

With fabric reinforcement, adhesive, hook and loop strips & tube holders.

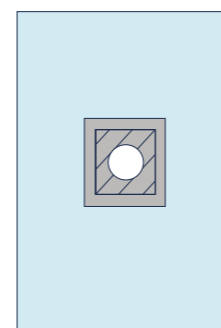
Size	Qty	FSH Code	NPC	Direct from FSH	Stocked at NHSSC	E-Direct via NHSSC
175cm x 300cm	30	50275	VJD901	✓	-	✓



Fenestrated Drape 1

With 10cm adhesive fenestration and fabric reinforcement.

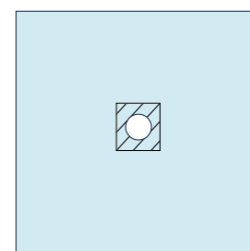
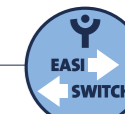
Size	Qty	FSH Code	NPC	Direct from FSH	Stocked at NHSSC	E-Direct via NHSSC
112cm x 120cm	30	50418	VJJ027	✓	-	✓



Fenestrated Drape 4

With 10cm adhesive fenestration fabric reinforcement.

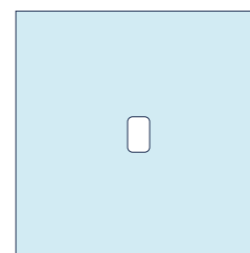
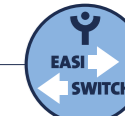
Size	Qty	FSH Code	NPC	Direct from FSH	Stocked at NHSSC	E-Direct via NHSSC
193cm x 305cm	30	50420	VJJ793	✓	-	✓



Fenestrated Drape 5

With adhesive 10cm fenestration.

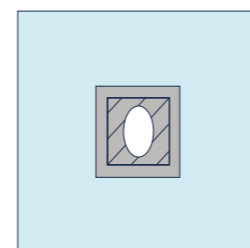
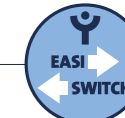
Size	Qty	FSH Code	NPC	Direct from FSH	Stocked at NHSSC	E-Direct via NHSSC
76cm x 76cm	30	50713	VJD2063	✓	-	✓



Fenestrated Drape 6

With 3cm x 5cm fenestration.

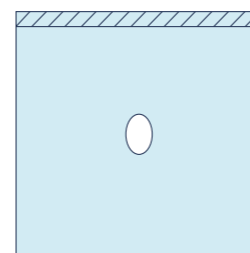
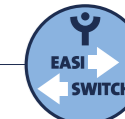
Size	Qty	FSH Code	NPC	Direct from FSH	Stocked at NHSSC	E-Direct via NHSSC
76cm x 76cm	30	50416	VJD791	✓	-	✓



Fenestrated Drape 7

With 6 x 8cm adhesive fenestration and fabric reinforcement.

Size	Qty	FSH Code	NPC	Direct from FSH	Stocked at NHSSC	E-Direct via NHSSC
76cm x 76cm	30	50417	VJD792	✓	-	✓



Fenestrated Drape 8

With 6 x 8cm fenestration and adhesive along top edge.

Size	Qty	FSH Code	NPC	Direct from FSH	Stocked at NHSSC	E-Direct via NHSSC
76cm x 76cm	30	50419	VJJ028	✓	-	✓

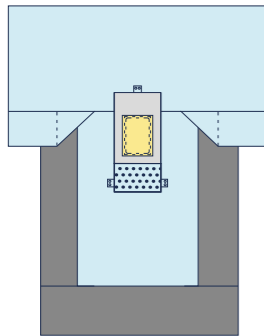


SURGICAL DRAPES



GENERAL SURGERY

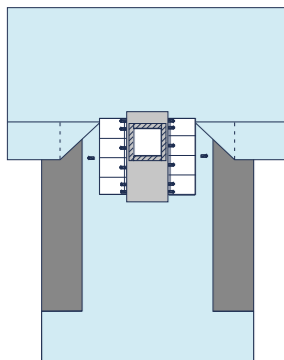
 SMS	 BLUE PE
 REINFORCEMENTS	 CLEAR PE
 ADHESIVE	 GREY PE
 INCISE	 LAMINATED MATERIAL



Laparotomy/Incise Drape

1 x perineal sheet 75cm x 160cm with 10cm perineal adhesive fenestration, 1 x under buttock drape 96cm x 122cm zoned reinforced, 2 x lithotomy leggings 79cm x 122cm with 15cm cuff and 1 x absorbent towel 38cm x 38cm.

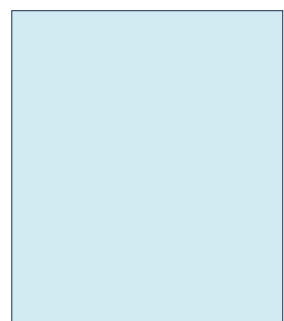
Size	Qty	FSH Code	NPC	Direct from FSH	Stocked at NHSSC	E-Direct via NHSSC
257cm x 323cm	10	50262	VJD1452	✓	-	✓



Laparoscopic Drape

With 23 x 35cm incision area with fabric reinforcement, tube holders, instrument pad and arm board covers.

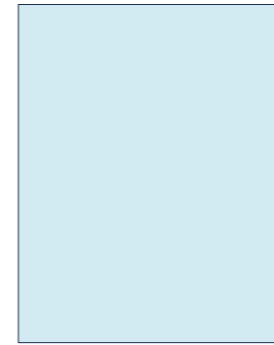
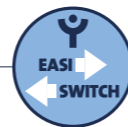
Size	Qty	FSH Code	NPC	Direct from FSH	Stocked at NHSSC	E-Direct via NHSSC
269cm x 312cm	10	50271	VEB018	✓	-	✓



Single Drape 1

No adhesive.

Size	Qty	FSH Code	NPC	Direct from FSH	Stocked at NHSSC	E-Direct via NHSSC
112cm x 152cm	30	50425	VJD798	✓	-	✓



Single Drape 2

No adhesive.

Size	Qty	FSH Code	NPC	Direct from FSH	Stocked at NHSSC	E-Direct via NHSSC
152cm x 193cm	30	50426	VJD799	✓	-	✓



Single Drape 3

No adhesive.

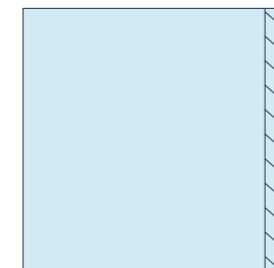
Size	Qty	FSH Code	NPC	Direct from FSH	Stocked at NHSSC	E-Direct via NHSSC
75cm x 75cm	30	50429	VJD030	✓	-	✓



Single Drape 4

No adhesive.

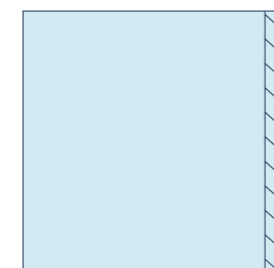
Size	Qty	FSH Code	NPC	Direct from FSH	Stocked at NHSSC	E-Direct via NHSSC
90cm x 90cm	30	50428	VJD801	✓	-	✓



Standard Absorbent Drape

No adhesive.

Size	Qty	FSH Code	NPC	Direct from FSH	Stocked at NHSSC	E-Direct via NHSSC
90cm x 90cm	30	55003	VJD893	✓	-	✓



Utility Drape 1

No adhesive.

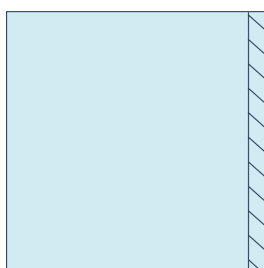
Size	Qty	FSH Code	NPC	Direct from FSH	Stocked at NHSSC	E-Direct via NHSSC
75cm x 75cm	30	50421	VJD794	✓	-	✓



SURGICAL DRAPES



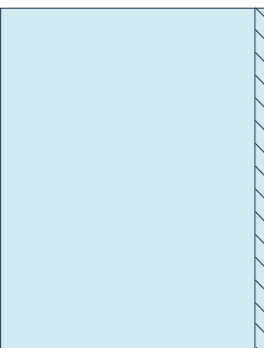
GENERAL SURGERY



Utility Drape 2

No adhesive.

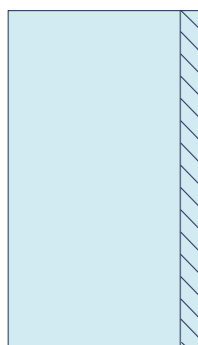
Size	Qty	FSH Code	NPC	Direct from FSH	Stocked at NHSSC	E-Direct via NHSSC
90cm x 90cm	30	50422	VJD795	✓	-	✓



Utility Drape 3

With adhesive.

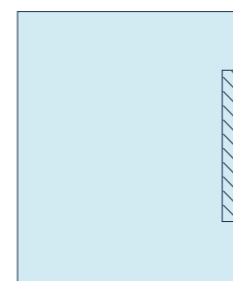
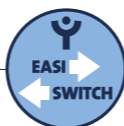
Size	Qty	FSH Code	NPC	Direct from FSH	Stocked at NHSSC	E-Direct via NHSSC
157cm x 240cm	30	50423	VJD796	✓	-	✓



Utility Drape 4

With adhesive.

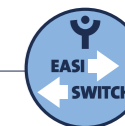
Size	Qty	FSH Code	NPC	Direct from FSH	Stocked at NHSSC	E-Direct via NHSSC
90cm x 160cm	30	50424	VJD188	✓	-	✓



Utility Drape 5

With adhesive.

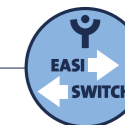
Size	Qty	FSH Code	NPC	Direct from FSH	Stocked at NHSSC	E-Direct via NHSSC
114cm x 110cm	30	50001	VJD847	✓	-	✓



Utility Drape 6

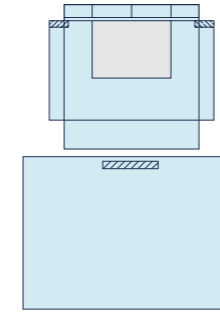
With adhesive.

Size	Qty	FSH Code	NPC	Direct from FSH	Stocked at NHSSC	E-Direct via NHSSC
160cm x 180cm	30	50002	VJD848	✓	-	✓



SURGICAL DRAPES

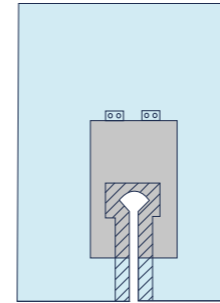
HEAD, NECK & OPHTHALMIC



Head Turban Pack

1 x head Turban 114 x 127cm with adhesive and fabric reinforcement, 1 x utility drape 180 x 190cm with 60cm adhesive on long edge.

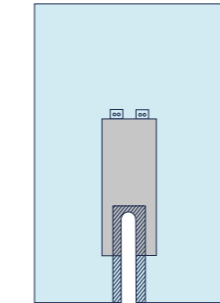
Size	Qty	FSH Code	NPC	Direct from FSH	Stocked at NHSSC	E-Direct via NHSSC
-	20	50706	VJF069	✓	-	✓



Thyroid Drape

With 5 x 101cm adhesive split, with fabric reinforcement and tube holders.

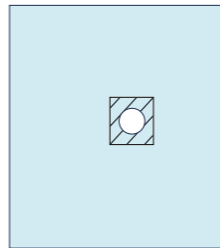
Size	Qty	FSH Code	NPC	Direct from FSH	Stocked at NHSSC	E-Direct via NHSSC
193cm x 300cm	30	50702	VJD824	✓	-	✓



U-Sheet

With 7cm x 58cm adhesive split, fabric reinforcement and tube holders.

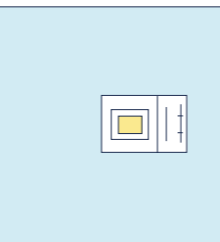
Size	Qty	FSH Code	NPC	Direct from FSH	Stocked at NHSSC	E-Direct via NHSSC
193cm x 304cm	20	50415	VJD790	✓	-	✓



Fenestrated Drape 5

With adhesive 10cm fenestration.

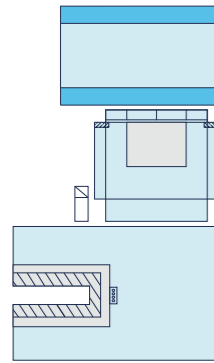
Size	Qty	FSH Code	NPC	Direct from FSH	Stocked at NHSSC	E-Direct via NHSSC
76cm x 76cm	30	50713	VJD2063	✓	-	✓



Ophthalmic Drape

With attached fluid collection pouch, full incise and eye wick.

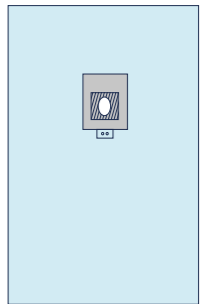
Size	Qty	FSH Code	NPC	Direct from FSH	Stocked at NHSSC	E-Direct via NHSSC
124.5cm x 139cm	30	50711	VJD827	✓	-	✓



EENT Set

1 x EENT u-sheet 193 x 304cm with a 7 x 58cm adhesive split, fabric reinforcement and tube holders, 1 x head turban 114 x 127cm with adhesive and fabric reinforcement, 1 x back table cover 137 x 190cm zoned reinforced and 1 x absorbent towel 38 x 38cm.

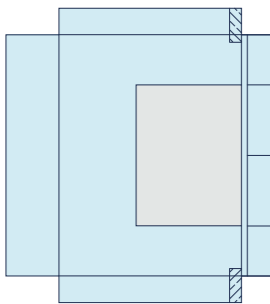
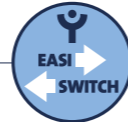
Size	Qty	FSH Code	NPC	Direct from FSH	Stocked at NHSSC	E-Direct via NHSSC
-	10	50700	VJD822	✓	-	✓



EENT Drape

No adhesive.

Size	Qty	FSH Code	NPC	Direct from FSH	Stocked at NHSSC	E-Direct via NHSSC
193cm x 305cm	14	50701	VJD823	✓	-	✓



Head Turban Drape

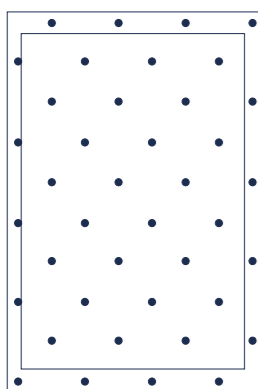
No adhesive.

Size	Qty	FSH Code	NPC	Direct from FSH	Stocked at NHSSC	E-Direct via NHSSC
114cm x 127cm	30	50705	VJD825	✓	-	✓

SURGICAL DRAPES



OBSTETRICS & GYNAECOLOGY



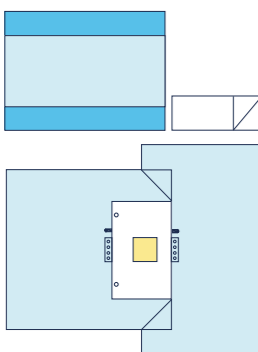
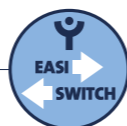
Baby Blanket

Sterile.

Size	Qty	FSH Code	NPC	Direct from FSH	Stocked at NHSSC	E-Direct via NHSSC
58cm x 87cm	50	00506	VJD912	✓	-	✓

Non-Sterile.

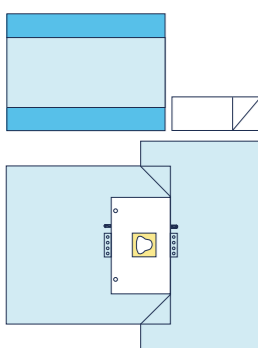
Size	Qty	FSH Code	NPC	Direct from FSH	Stocked at NHSSC	E-Direct via NHSSC
58cm x 87cm	100	00706	VJD913	✓	-	✓



C-Section Pack 1

1 x C-section drape 254cm x 305cm with full incise area, fluid collection pouch with 2 suction ports, arm board covers, hook & loop tape strips and tube holders, plus 1 x back table cover 152cm x 228cm zoned reinforced and 1 x absorbent towel 38cm x 38cm.

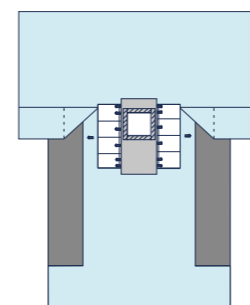
Size	Qty	FSH Code	NPC	Direct from FSH	Stocked at NHSSC	E-Direct via NHSSC
-	10	50410	VJD787	✓	-	✓



C-Section Pack 2

1 x C-section drape 254cm x 305cm with tear drop fenestrated incise, fluid collection pouch with 2 suction ports, arm board covers, hook & loop tape strips and tube holders, plus 1 x back table cover 152cm x 228cm zoned reinforced and 1 x absorbent towel 38cm x 38cm.

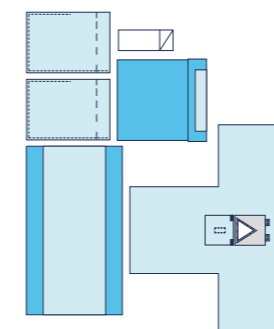
Size	Qty	FSH Code	NPC	Direct from FSH	Stocked at NHSSC	E-Direct via NHSSC
-	10	50411	VJD788	✓	-	✓



Laparoscopic Drape

With 28 x 35.5cm fenestration, fabric reinforcement, adhesive, pouches and tube holders.

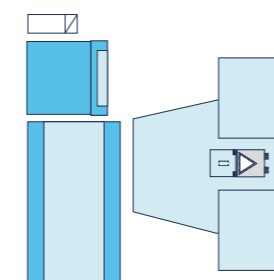
Size	Qty	FSH Code	NPC	Direct from FSH	Stocked at NHSSC	E-Direct via NHSSC
269cm x 312cm	10	50271	VEB018	✓	-	✓



Laparoscopy/Pelviscopy Pack 1

1 x laparoscopy t-drape 249cm x 251cm with triangle abdominal fenestration 7.5cm x 15cm perineal fenestration, adhesive, attached flap, hook & loop tape strips and tube holders, plus 1 x under buttock drape 96cm x 122cm zoned reinforced, 2 x lithotomy leggings 79cm x 122cm with 15cm cuff, 1 x backtable cover 152cm x 228cm zoned reinforced and 1 x absorbent towel 38cm x 38cm.

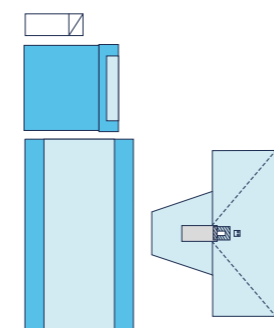
Size	Qty	FSH Code	NPC	Direct from FSH	Stocked at NHSSC	E-Direct via NHSSC
-	10	50406	VJD784	✓	-	✓



Laparoscopy/Pelviscopy Pack 2

1 x laparoscopy t-drape 254cm x 212cm with attached leggings with triangle abdominal fenestration 7.5cm x 15cm perineal fenestration with adhesive, attached flap, hook & loop tape strips and tube holders, plus 1 x under buttock drape 96cm x 122cm zoned reinforced, 1 x back table cover 137cm x 190cm zoned-reinforced and 1 x absorbent towel 38cm x 38cm.

Size	Qty	FSH Code	NPC	Direct from FSH	Stocked at NHSSC	E-Direct via NHSSC
-	10	50407	VJD1454	✓	-	✓



Lithotomy Pack 1

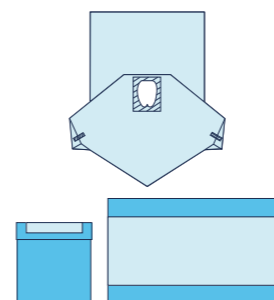
1 x lithotomy drape with attached leggings 254cm x 272cm with perineal fenestration 7.5cm x 15cm with positioning tape, fabric reinforcement and tube holders, plus 1 x under buttock drape 96cm x 122cm zoned reinforced, 1 x backtable cover 152cm x 228cm zoned reinforced and 1 x absorbent towel 38cm x 38cm.

Size	Qty	FSH Code	NPC	Direct from FSH	Stocked at NHSSC	E-Direct via NHSSC
-	10	50404	VJD782	✓	-	✓

SURGICAL DRAPES



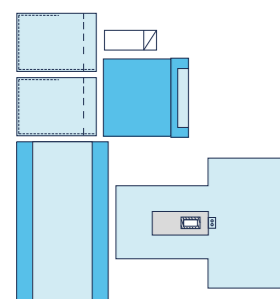
Urology/Gynaecology Set



1 x Urology/Gynaecology drape 200 x 284cm with 16 x 27cm adhesive fenestration and fluid collection pouch, plus 1 x back table cover 152 x 228cm zoned-reinforced and 1 x under buttock drape 96 x 122cm zoned-reinforced.

Size	Qty	FSH Code	NPC	Direct from FSH	Stocked at NHSSC	E-Direct via NHSSC
-	10	50464	VJD1460	✓	-	✓

OBSTETRICS & GYNAECOLOGY

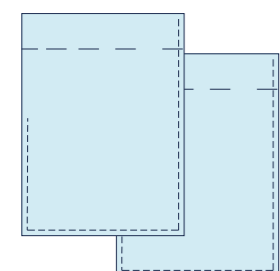


Lithotomy Pack 2

1 x lithotomy t-drape 152cm x 193cm with 7.5cm x 15cm perineal fenestration, adhesive and tube holders, plus 1 x under buttock drape 96cm x 122cm zoned reinforced, 2 x lithotomy leggings 79cm x 122cm with 15cm cuff, 1 x backtable cover 152cm x 228cm zoned reinforced and 1 x absorbent towel 38cm x 38cm.



Size	Qty	FSH Code	NPC	Direct from FSH	Stocked at NHSSC	E-Direct via NHSSC
-	10	50405	VJD783	✓	-	✓

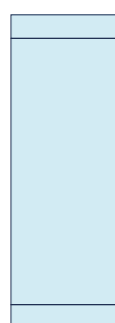


Lithotomy Leggings (pair)

With a 15cm cuff.



Size	Qty	FSH Code	NPC	Direct from FSH	Stocked at NHSSC	E-Direct via NHSSC
79cm x 122cm	30	50840	VJD843	✓	-	✓



Tape Strips

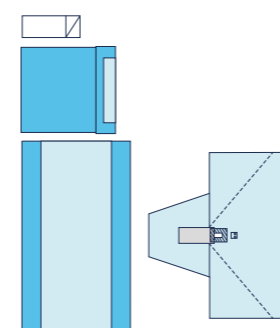
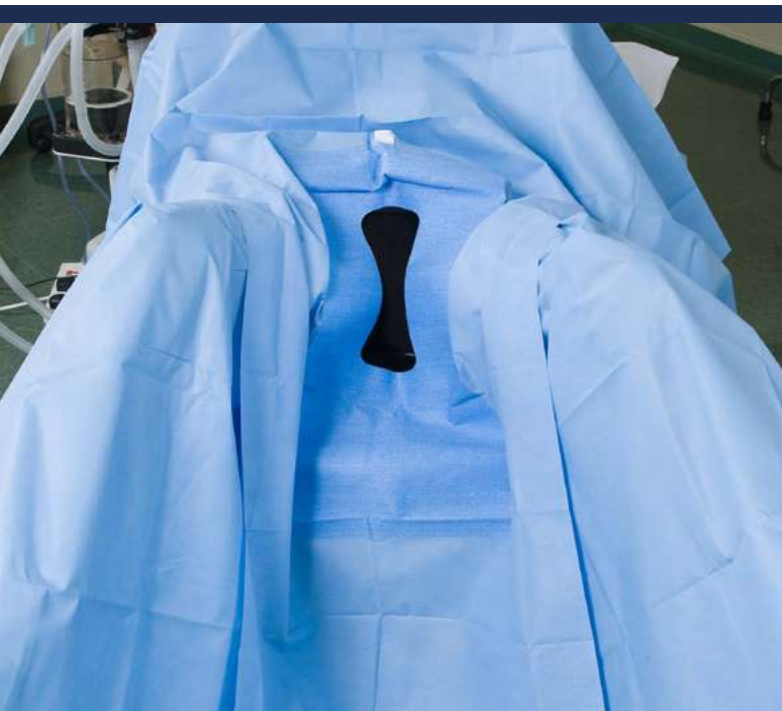
With a 15cm cuff.

Size	Qty	FSH Code	NPC	Direct from FSH	Stocked at NHSSC	E-Direct via NHSSC
10cm x 50cm	200	50845	VJD844	✓	-	✓



SURGICAL DRAPES

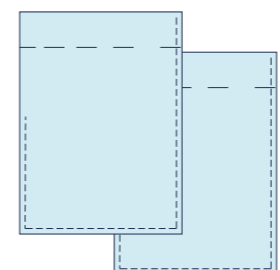
GYNAECOLOGY & UROLOGY



Lithotomy Pack 1

1 x lithotomy drape with attached leggings 254cm x 272cm with perineal fenestration 7.5cm x 15cm with positioning tape, fabric reinforcement and tube holders, plus 1 x under buttock drape 96cm x 122cm zoned reinforced, 1 x backtable cover 152cm x 228cm zoned reinforced and 1 x absorbent towel 38cm x 38cm.

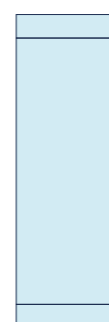
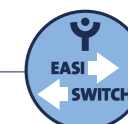
Size	Qty	FSH Code	NPC	Direct from FSH	Stocked at NHSSC	E-Direct via NHSSC
-	10	50404	VJD782	✓	-	✓



Lithotomy Leggings (pair)

With a 15cm cuff.

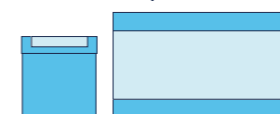
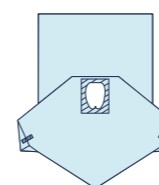
Size	Qty	FSH Code	NPC	Direct from FSH	Stocked at NHSSC	E-Direct via NHSSC
79cm x 122cm	30	50840	VJD843	✓	-	✓



Tape Strips

With a 15cm cuff.

Size	Qty	FSH Code	NPC	Direct from FSH	Stocked at NHSSC	E-Direct via NHSSC
10cm x 50cm	200	50845	VJD844	✓	-	✓



Urology/Gynaecology Set

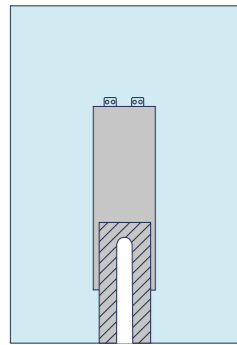
1 x Urology/Gynaecology drape 200 x 284cm with 16 x 27cm adhesive fenestration and fluid collection pouch, plus 1 x back table cover 152 x 228cm zoned-reinforced and 1 x under buttock drape 96 x 122cm zoned-reinforced.

Size	Qty	FSH Code	NPC	Direct from FSH	Stocked at NHSSC	E-Direct via NHSSC
-	10	50464	VJD1460	✓	-	✓

SURGICAL DRAPES

EASIDRAPE™

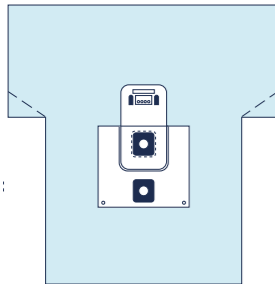
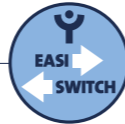
ARTHROSCOPY & ORTHOPAEDIC



Adhesive Split Sheet

With 10 x 101cm adhesive split, fabric reinforcement and tube holders.

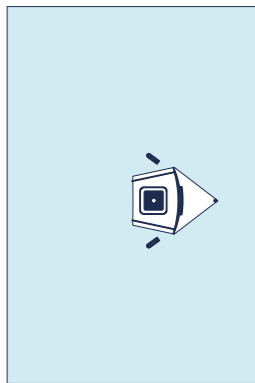
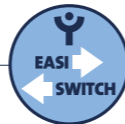
Size	Qty	FSH Code	NPC	Direct from FSH	Stocked at NHSSC	E-Direct via NHSSC
193cm x 304cm	30	50427	VJD800	✓	-	✓



Arthroscopy Drape

With flexible fluid collection pouch, reflux shields and two suction ports, arm board covers, tube holders and hook and loop strips.

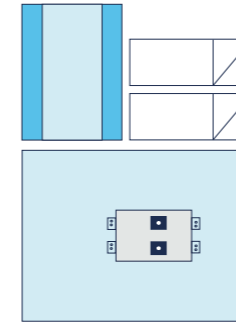
Size	Qty	FSH Code	NPC	Direct from FSH	Stocked at NHSSC	E-Direct via NHSSC
292cm x 344cm	20	50444	VJD2170	✓	-	✓



Beach Chair Shoulder Drape

With 33 x 33cm tear drop conformable fenestration, fluid collection pouch with suction port and hook and loop strips.

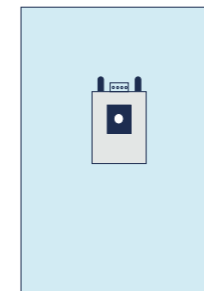
Size	Qty	FSH Code	NPC	Direct from FSH	Stocked at NHSSC	E-Direct via NHSSC
267cm x 400cm	10	50449	VJD810	✓	-	✓



Bilateral Knee Set 1

1 x Bilateral knee drape 193 x 305cm, with two 6cm conformable fenestrations, fabric reinforcement and tube holders. 1 x back table cover 152 x 228cm zoned reinforced and 2 tape strips.

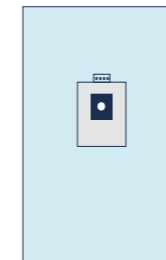
Size	Qty	FSH Code	NPC	Direct from FSH	Stocked at NHSSC	E-Direct via NHSSC
-	10	50618	VJD814	✓	-	✓



Extremity Drape

With 6cm conformable fenestration, fabric reinforcement, tube holders and hook and loop strips.

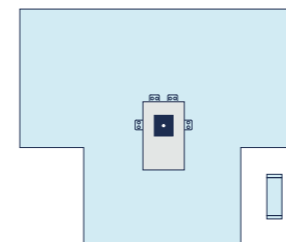
Size	Qty	FSH Code	NPC	Direct from FSH	Stocked at NHSSC	E-Direct via NHSSC
231cm x 365cm	20	50441	VJD806	✓	-	✓



Foot/Ankle Drape

With 3cm conformable fenestration, fabric reinforcement and tube holders.

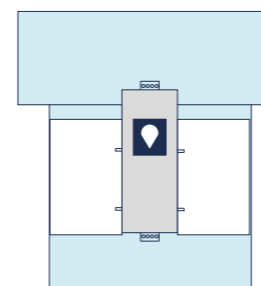
Size	Qty	FSH Code	NPC	Direct from FSH	Stocked at NHSSC	E-Direct via NHSSC
192cm x 305cm	14	50435	VJD804	✓	-	✓



Hand Drape Pack

1 x hand drape with 2cm conformable fenestration, fabric reinforcement and tube holders and 1 x tape strip 10cm x 50cm.

Size	Qty	FSH Code	NPC	Direct from FSH	Stocked at NHSSC	E-Direct via NHSSC
290cm x 361cm	10	50440	VJD805	✓	-	✓



Hip Drape with pockets

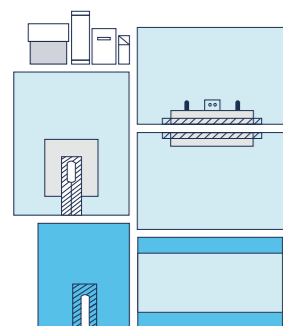
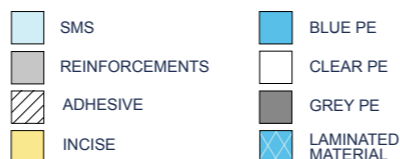
With 21 x 17cm tear drop conformable fenestration, clear pockets on both sides, arm board covers, fabric reinforcement, tube holders and hook and loop strips.

Size	Qty	FSH Code	NPC	Direct from FSH	Stocked at NHSSC	E-Direct via NHSSC
290cm x 320cm	10	50446	VJD809	✓	-	✓

SURGICAL DRAPES

EASIDRAPE™

ARTHROSCOPY & ORTHOPAEDIC



Hip Pack

1 x top drape 175 x 300cm with adhesive with fabric reinforcement and tube holders, x bottom drape 175 x 300cm with adhesive, 1 x impervious split drape 137 x 193cm with a 15cm x 60cm adhesive split, 1 x U-drape 210 x 260cm with a 10 x 37cm adhesive fenestration and 56cm adhesive split with fabric reinforcement, 1 x impervious stockinette 30 x 122cm, 1 x back table cover 152 x 228cm zoned reinforced, 1 x absorbent towel 38 x 38cm, 1 x tape strip 10 x 50cm and 1 x suture bag.

Size	Qty	FSH Code	NPC	Direct from FSH	Stocked at NHSSC	E-Direct via NHSSC
-	10	50530	VJD811	✓	-	✓

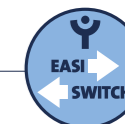
Impervious Stockinette - Medium



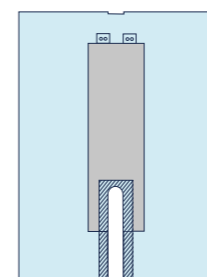
Size	Qty	FSH Code	NPC	Direct from FSH	Stocked at NHSSC	E-Direct via NHSSC
23cm x 75cm	30	50833	VJD841	✓	-	✓



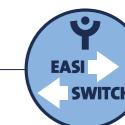
Impervious Stockinette - Large



Size	Qty	FSH Code	NPC	Direct from FSH	Stocked at NHSSC	E-Direct via NHSSC
30cm x 122cm	30	50834	VJD842	✓	-	✓

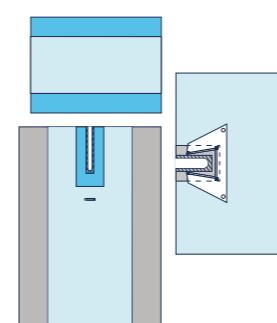


Orthopaedic U-Sheet



With 22 x 96cm adhesive split, fabric reinforcement and tube holders.

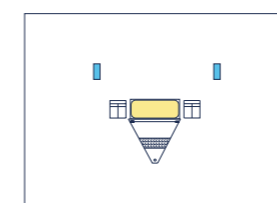
Size	Qty	FSH Code	NPC	Direct from FSH	Stocked at NHSSC	E-Direct via NHSSC
200cm x 254cm	30	50430	VJD802	✓	-	✓



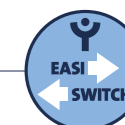
Shoulder Pack

1 x split u-drape 206 x 295cm with 8 x 70cm adhesive split and hook and loop strip, 1 x split shoulder drape 168 x 254cm with 12 x 44cm adhesive split and attached fluid collection pouch with 2 suction ports. 1 x back table cover 112 x 118cm zoned reinforced.

Size	Qty	FSH Code	NPC	Direct from FSH	Stocked at NHSSC	E-Direct via NHSSC
-	10	50451	VJD1459	✓	-	✓

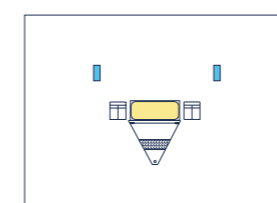


Vertical Isolation Drape 1



1 x split u-drape 206 x 295cm with 8 x 70cm adhesive split and hook and loop strip, 1 x split shoulder drape 168 x 254cm with 12 x 44cm adhesive split and attached fluid collection pouch with 2 suction ports. 1 x back table cover 112 x 118cm zoned reinforced.

Size	Qty	FSH Code	NPC	Direct from FSH	Stocked at NHSSC	E-Direct via NHSSC
246cm x 328cm	14	50550	VJD812	✓	-	✓



Vertical Isolation Drape 2

Clear PE panel with 30.5 x 40.5cm adhesive incise area. Fluid collection pouch with suction port. Attachable instrument pouch and tube holders.

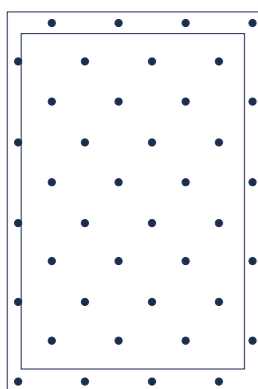
Size	Qty	FSH Code	NPC	Direct from FSH	Stocked at NHSSC	E-Direct via NHSSC
246cm x 328cm	14	50660	-	✓	-	✓



SURGICAL DRAPES



SUPPLEMENTRY DRAPES & ACCESSORIES



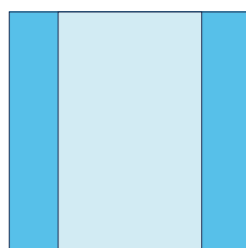
Baby Blanket

Sterile.

Size	Qty	FSH Code	NPC	Direct from FSH	Stocked at NHSSC	E-Direct via NHSSC
58cm x 87cm	50	00506	VJD912	✓	-	✓

Non-Sterile.

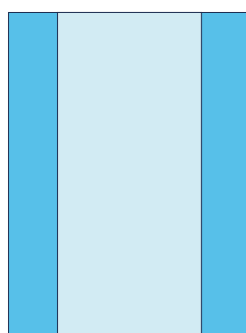
Size	Qty	FSH Code	NPC	Direct from FSH	Stocked at NHSSC	E-Direct via NHSSC
58cm x 87cm	100	00706	VJD913	✓	-	✓



Backtable/Trolley Cover 1

Zoned reinforcement.

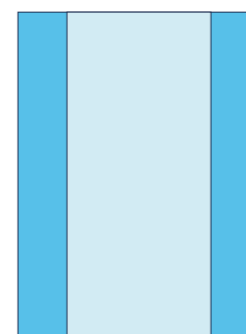
Size	Qty	FSH Code	NPC	Direct from FSH	Stocked at NHSSC	E-Direct via NHSSC
112cm x 112cm	30	50811	VJD887	✓	-	✓



Backtable/Trolley Cover 2

Zoned reinforcement.

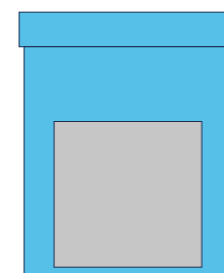
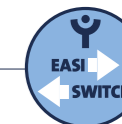
Size	Qty	FSH Code	NPC	Direct from FSH	Stocked at NHSSC	E-Direct via NHSSC
140cm x 190cm	30	50815	VJD837	✓	-	✓



Backtable/Trolley Cover 4

Zoned reinforcement.

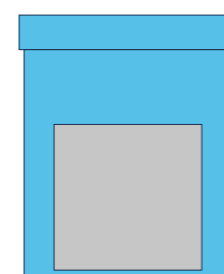
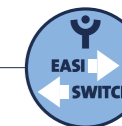
Size	Qty	FSH Code	NPC	Direct from FSH	Stocked at NHSSC	E-Direct via NHSSC
152cm x 228cm	30	50816	VJD838	✓	-	✓



Mayo Stand Cover 1

With a 15cm cuff.

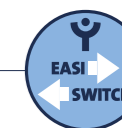
Size	Qty	FSH Code	NPC	Direct from FSH	Stocked at NHSSC	E-Direct via NHSSC
58cm x 137cm	30	50800	VJD832	✓	-	✓



Mayo Stand Cover 2

With a 15cm cuff.

Size	Qty	FSH Code	NPC	Direct from FSH	Stocked at NHSSC	E-Direct via NHSSC
80cm x 144cm	30	50802	VJD834	✓	-	✓

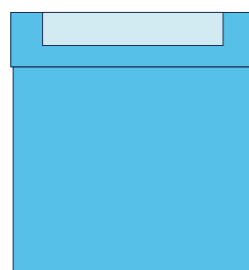


SURGICAL DRAPES



EASIDRAPE™

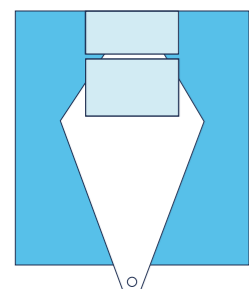
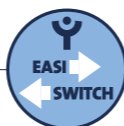
SUPPLEMENTRY DRAPES & ACCESSORIES



Under Buttock Drape 1

Zoned reinforcement.

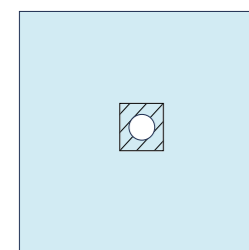
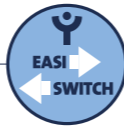
Size	Qty	FSH Code	NPC	Direct from FSH	Stocked at NHSSC	E-Direct via NHSSC
96cm x 122cm	30	50725	VJD830	✓	-	✓



Under Buttock Drape 2

Zoned reinforcement.

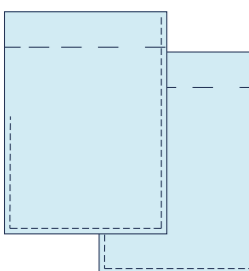
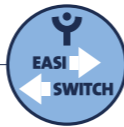
Size	Qty	FSH Code	NPC	Direct from FSH	Stocked at NHSSC	E-Direct via NHSSC
102cm x 112cm	30	50726	VJD831	✓	-	✓



Fenestrated Drape 5

With adhesive 10cm fenestration.

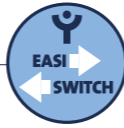
Size	Qty	FSH Code	NPC	Direct from FSH	Stocked at NHSSC	E-Direct via NHSSC
76cm x 76cm	30	50713	VJD2063	✓	-	✓



Lithotomy Leggings (pair)

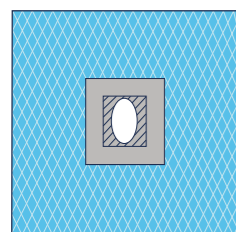
With a 15cm cuff.

Size	Qty	FSH Code	NPC	Direct from FSH	Stocked at NHSSC	E-Direct via NHSSC
79cm x 122cm	30	50840	VJD843	✓	-	✓



SURGICAL DRAPES

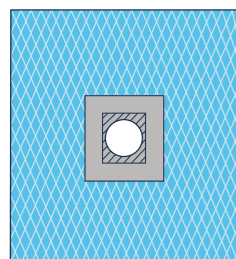
LAMINATED DRAPES



Fenestrated Drape 2

Laminate with 6 x 8cm adhesive fenestration and fabric reinforcement.

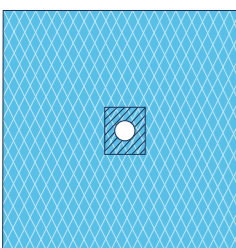
Size	Qty	FSH Code	NPC	Direct from FSH	Stocked at NHSSC	E-Direct via NHSSC
76cm x 76cm	100	58417	VJD3375	✓	-	✓



Fenestrated Drape 3

Laminate with 6 x 8cm adhesive fenestration and fabric reinforcement.

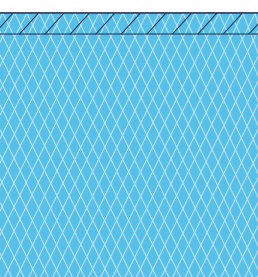
Size	Qty	FSH Code	NPC	Direct from FSH	Stocked at NHSSC	E-Direct via NHSSC
112cm x 120cm	100	58418	VJD3379	✓	-	✓



Fenestrated Drape 5

Laminate with 10cm adhesive fenestration..

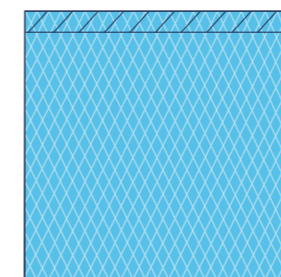
Size	Qty	FSH Code	NPC	Direct from FSH	Stocked at NHSSC	E-Direct via NHSSC
76cm x 76cm	100	58713	VJD3376	✓	-	✓



Utility Drape 1

Laminate with adhesive.

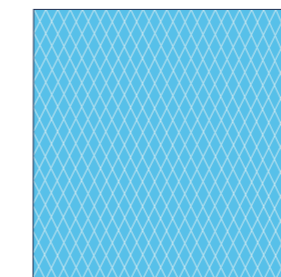
Size	Qty	FSH Code	NPC	Direct from FSH	Stocked at NHSSC	E-Direct via NHSSC
75cm x 75cm	100	58421	VJD3373	✓	-	✓



Utility Drape 2

Laminate with adhesive.

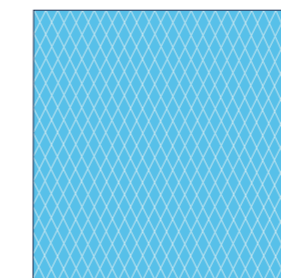
Size	Qty	FSH Code	NPC	Direct from FSH	Stocked at NHSSC	E-Direct via NHSSC
90cm x 90cm	100	58422	VJD3378	✓	-	✓



Single Drape 1

Laminate, no adhesive.

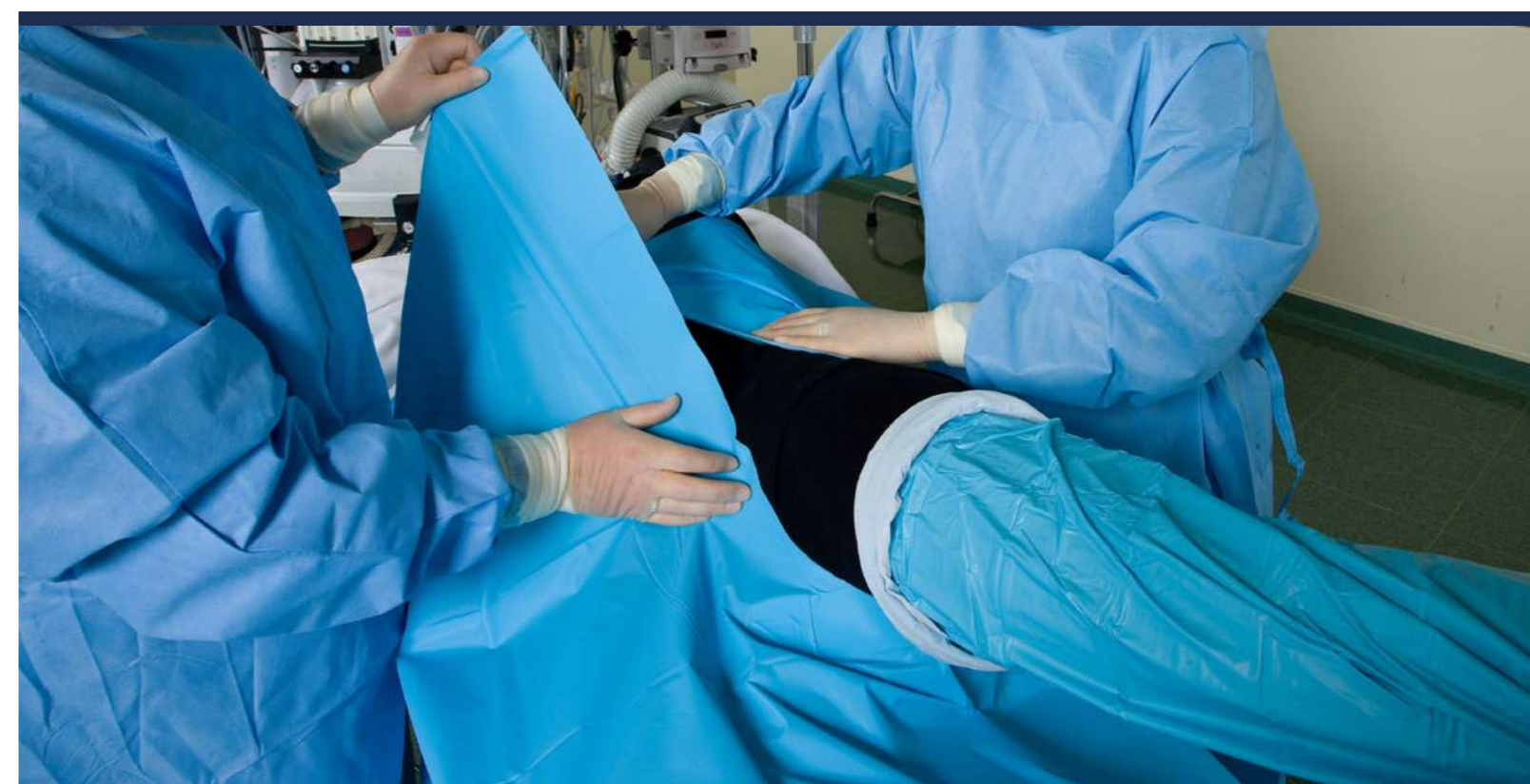
Size	Qty	FSH Code	NPC	Direct from FSH	Stocked at NHSSC	E-Direct via NHSSC
75cm x 75cm	100	58429	VJD3372	✓	-	✓



Single Drape 2

Laminate, no adhesive.

Size	Qty	FSH Code	NPC	Direct from FSH	Stocked at NHSSC	E-Direct via NHSSC
90cm x 90cm	100	58428	VJD3377	✓	-	✓



RPE - RESPIRATORY PROTECTION EQUIPMENT

EASIMASK™

SINGLE-USE FFP3 RESPIRATORS

Valved

Valved single-use respirators have a one-way valve that lets your breath out as you exhale, but does not allow air in through the valve. This reduces heat build up in the respirator without affecting the wearer's safety, making them more comfortable to wear over extended periods of time. However a valve respirator is only ever protecting the wearer, because the wearers breath can exit the respirator via the valve.

Unvalved

Unvalved single-use respirators however have no valve, meaning that the air breathed out is filtered in the same way that it is when breathing in. This makes unvalved models suitable for protecting the wearer from airborne hazards and those around them from any viruses that the wearer may have.



Valved Respirator

Filters the air you breathe in but does NOT filter the air you breathe out



Unvalved Respirator

Filters the air you breathe in AND filters the air you breathe out

Custom-Fit FFP3 Respirator Masks

The Custom-Fit Easimask respirator has been specially designed to fit a wide range of face shapes and provide superior comfort, even in extended use.

Its pre-formed structure and adjustable straps make it the perfect choice for a secure fit for up to 8 hours. All of our respirators conform to EN 149: 2001 + A1: 2009 FFP3.



FSM18 Custom-Fit

Unvalved.

FSH	NPC Code	Direct from FSH	Stocked at NHSSC	E-Direct via NHSSC	Qty
FSM18	BWK85010	✓	✓	-	10

RPE - RESPIRATORY PROTECTION EQUIPMENT

EASIMASK™

POWERED AIR PURIFYING RESPIRATORS (PAPR)

Tight-fitting RPE isn't an option for everyone. A flexible option for people that need RPE and haven't been fit tested, failed a fit test or can't tolerate tight fitting RPE for long periods of time.

Facial hair, scarring, dental work and face-shape can all potentially lead to someone not achieving a suitable fit.

Instead of relying on a tight-fitting seal around the user's mouth and nose, loose-fitting Powered Air devices work by battery powered fans drawing contaminated air through a filter,

purifying the air and then forcing it through a tube to the wearer's hood/helmet. As the clean air is continually supplied to the hood it prevents contaminated air seeping in through the loose curtain seal around the visor.

As a tight-fitting seal is not required, loose-fitting powered air may be used without a fit test.



Loose-fitting Powered Air Respirators

Fit Test Required	No
Reusable	Yes
Filter Type	P3 - particles including pathogens and viruses
Facial Hair	Yes



RPE - RESPIRATORY PROTECTION EQUIPMENT

Dräger

FULL FACE PAPR DRÄGER X-PLORE 8000

Challenging workplace conditions demand reliable solutions.

The Dräger X-Plore® 8000 offers a new level of intuitive handling combined with intelligent electronics that provide the high degree of safety your people need to focus on the task at hand.

Easy to assemble and change filters, the on-board optical error sensor will alert the user if a filter is not equipped properly or is getting clogged.

Dräger X-Plore® 8000 Accessories, Filters & Kit

Product Code	Description	Qty
IND-110-2354	Blower Unit	1
IND-110-2365	High Capacity Battery	1
IND-110-2356	Charger	1
IND-110-2357	Standard Belt	1
IND-110-2364	Hood Hose	1
IND-110-2358	P R SL/P3 Filter	25
IND-110-2359	ABEK1 Hg P R SL Filter	10
IND-110-2371	A2 Filter	10
IND-110-2362	Premium Hood - Short	1
IND-110-2363	Premium Hood - Long	1
IND-110-2360	Disposable Hood - Short	10
IND-110-2361	Disposable Hood - Long	10
IND-110-2459	Tear-off Visors	10
IND-119-0027	Kit (with premium short hood): 1 x Blower unit, 1 x 8hr NmH battery, 1 x smart-charger, 1 x fixed length hose, belt, flow tester & 1 x storage box.	1



DRÄGER
X-PLORE 8000



FIT TESTING

Fit Testing is carried out to assess whether a given respirator is suitable for a given individual.

It is a legal requirement that employees needing to wear tight-fitting RPE pass a fit test on the respirator they will be wearing before starting the task they require it for.

Quantitative Fit Testing (QNFT)

The quantitative fit testing method measures and compares the number of particles inside and outside the respirator when worn, using a specialist piece of machinery, to objectively assess the suitability of the seal.

- Gives an accurate level on how well the respirator fits (fit factor).
- Objectively measured through specialist equipment and not reliant on the wearer's judgement.
- Easy to set up and administer with on-screen instructions.
- Quick and reliable.



QUANTITATIVE FIT TESTING

PortaCount®

The PortaCount® machine is a portable solution for conducting Fit Testing using the Quantitative method.



The new 8040 series features an all new design and intelligent tablet/laptop integration that walks you through the Fit Testing process with fully animated videos.

PortaCount® 8040 Respirator Fit Tester

Suitable for Fit Testing P3, Half-Face and Full-Face Respirators

Product Code	Description	Qty
IND-118-0001	Carry Case; AC Adapter with Universal Plug Set; Alcohol Cartridge; Alcohol Fill Capsule; Storage Cap; Twin-Tube; (2) Zero Check Filters; 3/16" and 1/4" Hose Adapters; (2) Spare Alcohol Wicks; USB Cable; 8016 Alcohol Supply containing (16) 30ml Bottles of Reagent Grade Isopropyl Alcohol; FitPro Ultra Fit Test Software and 2-Year Warranty.	1

PortaCount® 8048 Respirator Fit Tester

N95 technology suitable for Fit Testing P1, P2, P3, Half-Face and Full-Face Respirators

Product Code	Description	Qty
IND-118-0002	Carry Case; AC Adapter with Universal Plug Set; 8026 Particle Generator (230 VAC); Alcohol Cartridge; Alcohol Fill Capsule, Storage Cap; Twin-Tube; (2) Zero Check Filters; 3/16" and 1/4" Hose Adapters; (2) Spare Alcohol Wicks; (100) Sampling Probes; (100) Lock Washers; Probe Insertion Tool; Neck Strap; USB Cable; 8016 Alcohol Supply containing (16) 30ml Bottles of Reagent Grade Isopropyl Alcohol; FitPro Ultra Fit Test Software and 2-Year Warranty.	1

Accessories

Product Code	Description	Qty
IND-118-0003	Probe Kit - Filtering facepieces, 500 probes, pushnuts and tool set.	1
IND-118-0004	Probe Refill Kit - 500 probes and pushnuts.	1
IND-118-0005	Particle Generator - 240 VAC UK	1
IND-118-0006	Twin-Tube - 5ft long	1
IND-118-0007	Isopropyl Alcohol - 16 x 30ml bottles	16
IND-118-0008	8040 5 years extended warranty	1
IND-118-0010	8040 Calibration Service	1
IND-118-0013	8040 2 Year Calibration Service Contract	1
IND-118-0014	8040 3 Year Calibration Service Contract	1
IND-118-0009	8048 5 years extended warranty	1
IND-118-0011	8048 Calibration Service	1
IND-118-0015	8048 3 Year Calibration Service Contract	1



Harrowden Court, 66-80 Huxley Close, Wellingborough, Northamptonshire NN6 6AB, United Kingdom
Tel: +44 (0)1933 672180 Email: info@fullsupporthealthcare.com www.fullsupporthealthcare.com

Healthcare Product Catalogue.

Published: April 2023. Revised: May 2023 Version Control No: FSH-0342-B

© Copyright 2023